

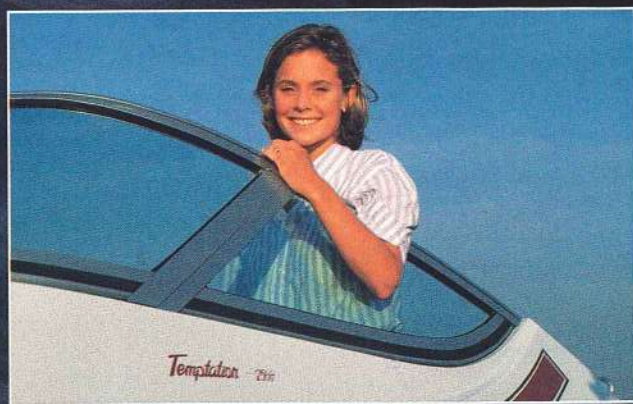
TemptationTM

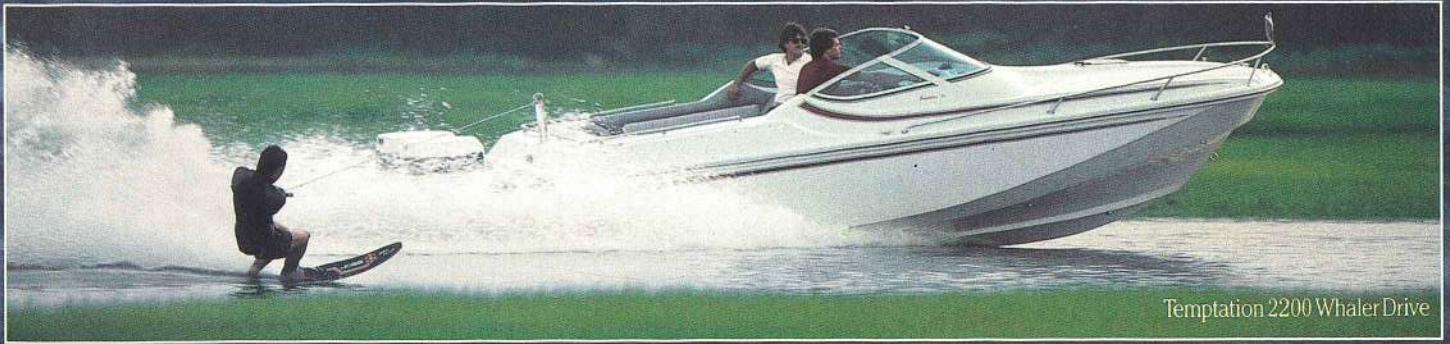
BY BOSTON WHALER[®]



The first performance boat that's built like a Boston Whaler.

From its long, sleek deck to its swept-back windshield and its pleasingly-low cockpit coaming, Boston Whaler's new Temptation has the kind of lines that make your throttle-hand itch just by looking at them.





Temptation 2200 Whaler Drive

But the Temptation has something else, too. It has the unsinkable heart and soul of a Boston Whaler. In terms of strength, durability, and safety, it is to the typical performance boat what the Statue of Liberty is to the typical lawn ornament. That's why it's backed by a 10-year transferable warranty that's strong as – Temptation. Available in three models, 20, 22, and 25 feet, your Temptation can be rigged with an assortment of thunder-voiced I/O's or stern-bracketed outboards. Temptation. It's the Boston Whaler that's setting new standards for performance boats. And it could be the Boston Whaler that makes you decide it's time to give in to Temptation.



Temptation 2200 I/O

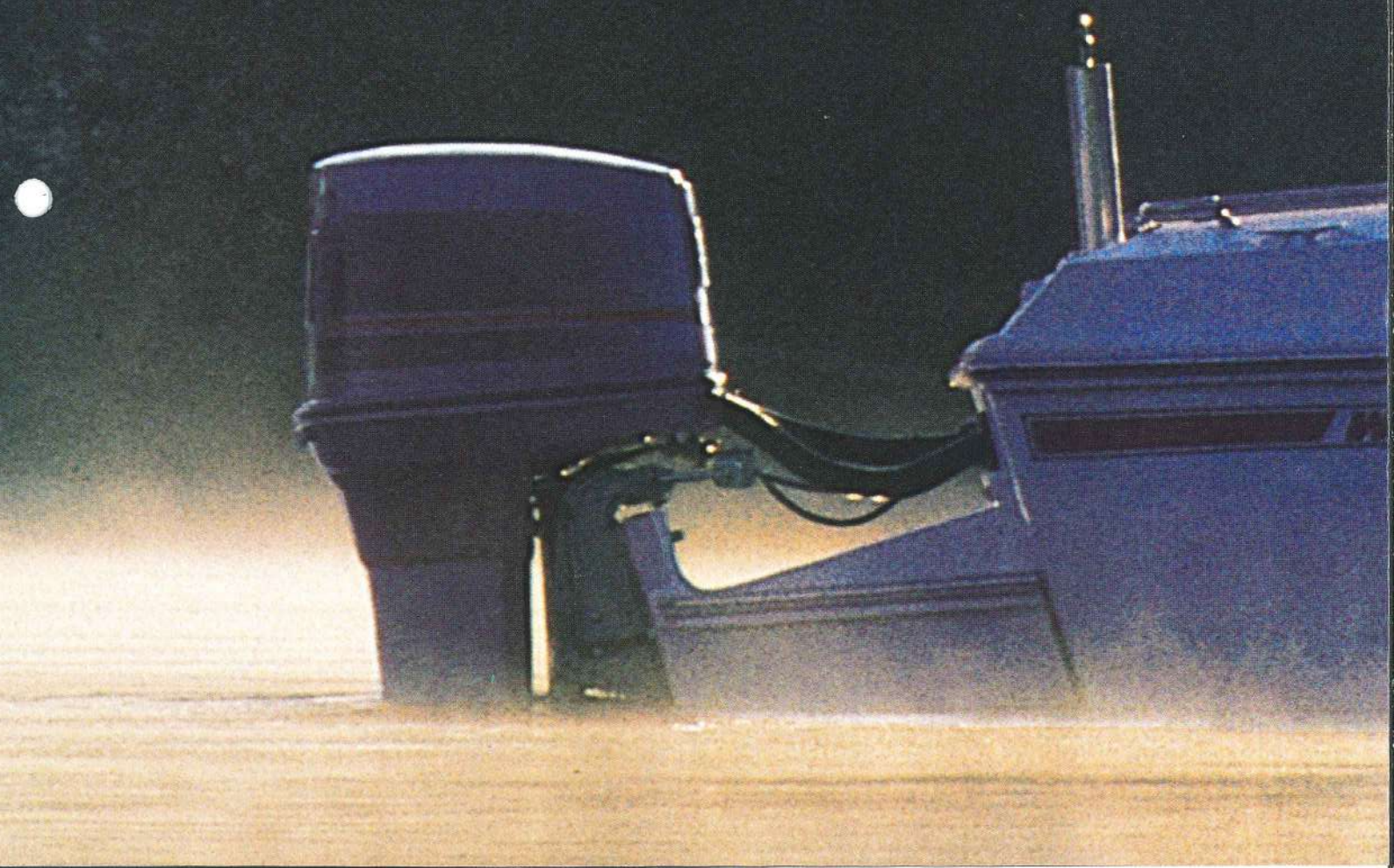
Temptation. Performance style. Boston Whaler quality.

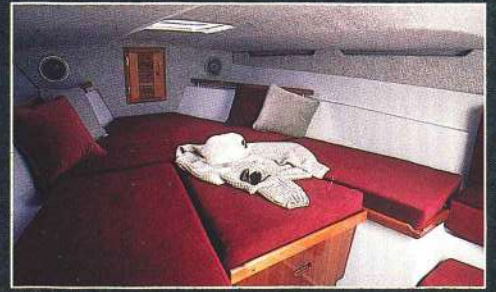
The Boston Whaler Temptation represents the best of contemporary performance style.

The cockpit, with its swept-back windshield, performance dash, bucket seats, and color scheme in elegant shades of burgundy and grey, is designed for full-throttle cruising and full-tilt entertaining.

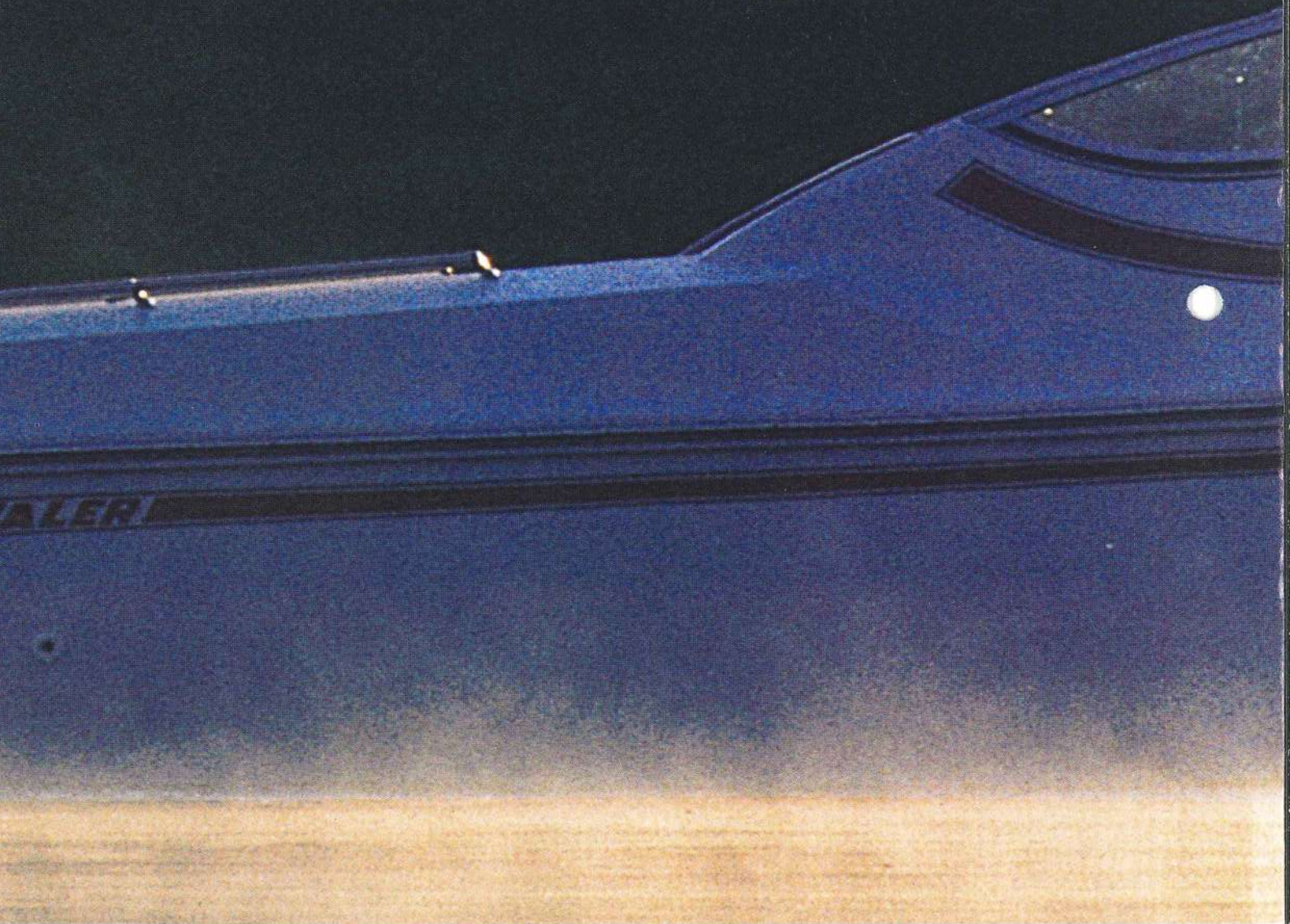
In keeping with the performance boat tradition, the cabin layout is simple. It features plush carpeting, two 6' 4" berths, a storage locker, mood lighting, and room for a Porta Potti.[®]

Also in the performance-boat tradition, there is a large choice of power options, including



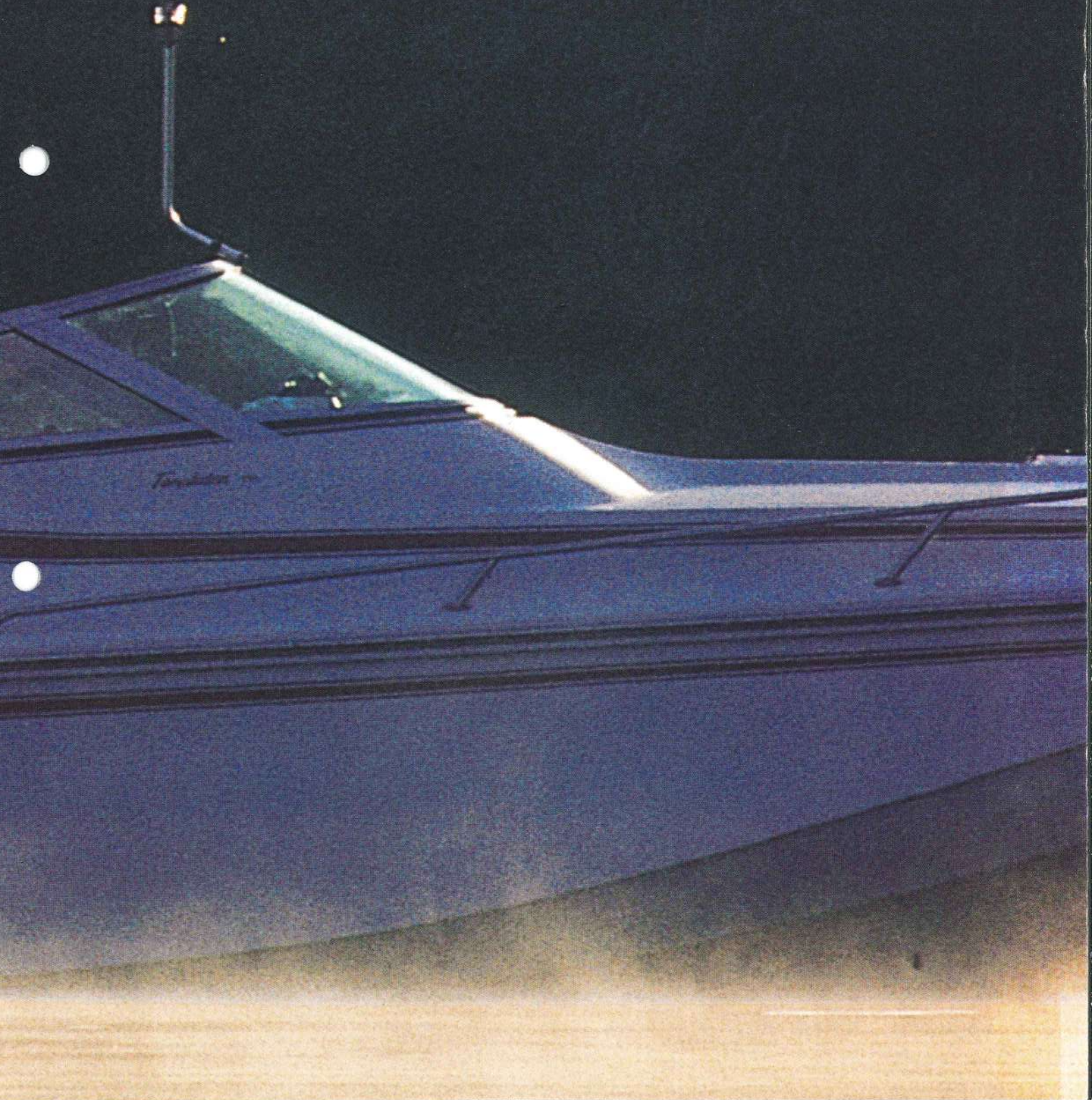
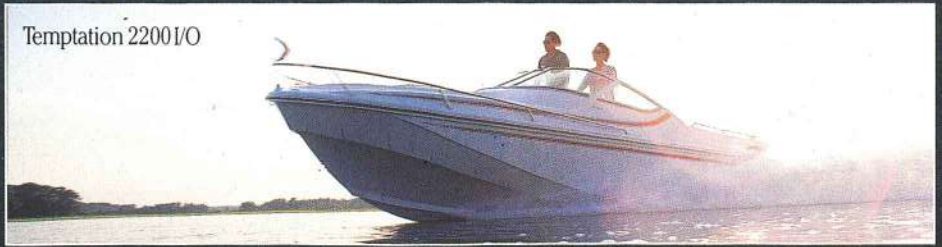


I/O's, Sea Drives, Gil Brackets, and our own new Whaler Drives, which have a swimming/boarding platform designed into them.



Yet, Temptation is much more than a performance boat. It is a Boston Whaler. Its hull design is the same unique combination of strake, chine, and entry angles that has made Boston Whaler Outrages, Revenges and Whaler 27's renowned for their soft, dry ride and their ability to handle whatever the sea puts in their way.

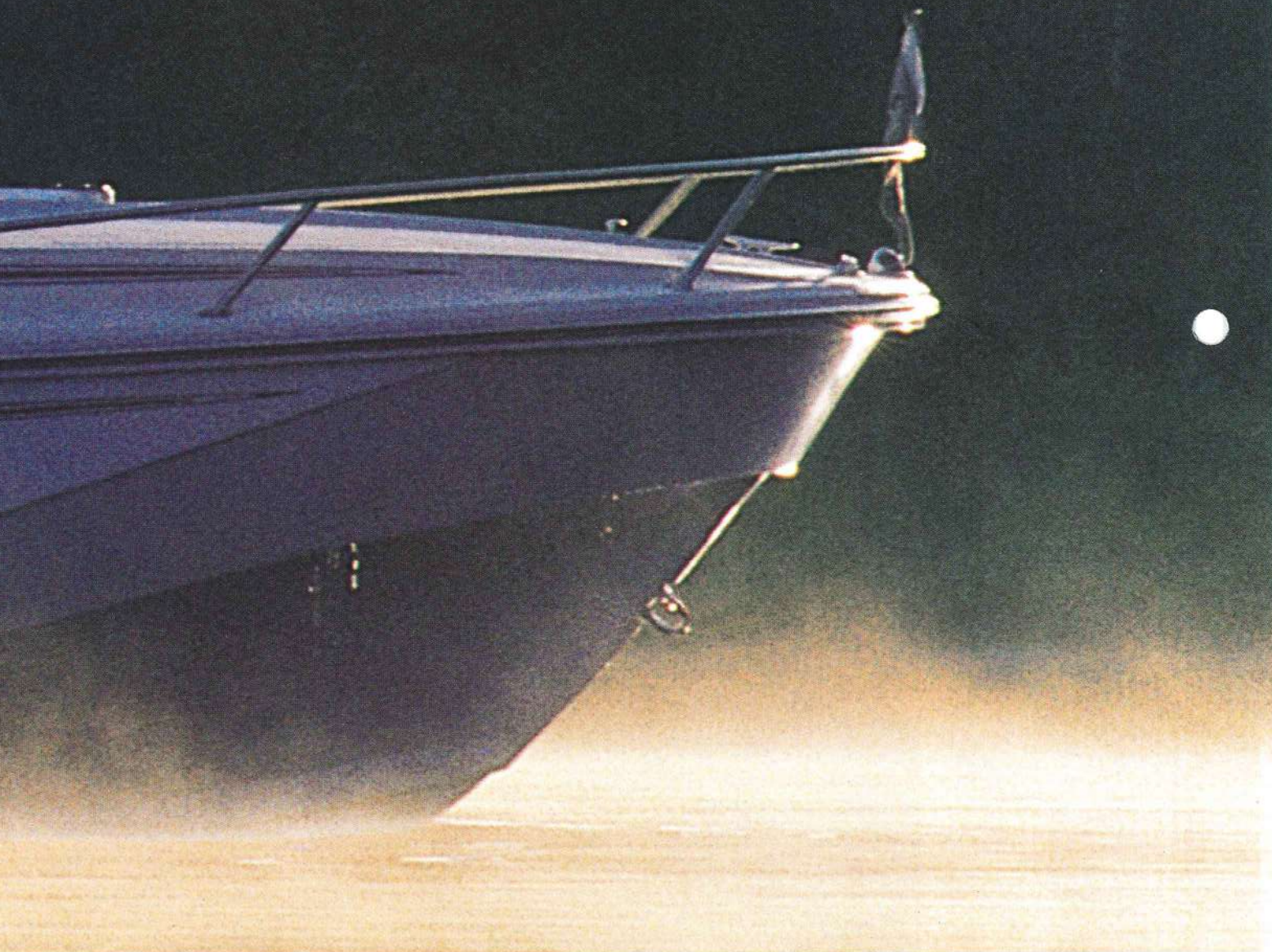
Its foam-core method of construction is also unique to Boston Whaler, and results in an



unsinkable, solid, single-piece hull so strong that one of our smaller Boston Whalers actually came out unscathed from an unplanned trip over Niagara Falls, and so buoyant that it has two and a half times the flotation required to meet Coast Guard regulations and National Marine Manufacturers Association standards.

The strength and durability of the hull are why every Temptation is backed by Boston Whaler's famous 10-year transferable warranty, good no matter how many times the boat is sold. It's a warranty that will bring you more peace of mind now, and a higher resale value later.

Temptation 2500 Whaler Drive



Some tempting options.

To find out about all the Temptation options, you'll want to see your Boston Whaler dealer. But a few deck and cockpit options you might want to know about include: A ski pylon, for the safe and efficient towing of water skiers; stereo, so you can add good sounds to your good times;



an upholstered cockpit table with a built-in cooler; windshield wipers, for safety as well as convenience; cockpit deck carpet, adding even more luxury to your lounging; cockpit courtesy lights; and a tonneau cover, to protect the cockpit from the elements when you're not aboard.



Cabin options include a Porta Potti[®], for comfort and convenience, and a bunk extension cushion that allows you to hide away the Porta Potti when it is not in use and to add to the already-generous berth area.

Power options include Whaler Drive[™], Gil Brackets, Sea Drives, or I/O's. For increased performance, I/O's are available with through-transom exhaust. On I/O's without through-transom exhaust, a swim

platform is available. The Whaler Drive is a transom-mounted outboard unit built with the same foam-core technique Boston Whaler hulls have become famous for. It adds to the Temptation's performance, looks, and increases buoyancy aft.



Temptation 2000. LOA 20'3" • Beam 7'5" • Draft (lower unit tilted clear of water) 11" • Boat wt. 2,250 lbs. without engine • Max weight capacity, NMMA and U.S. Coast Guard standards (outboard: persons, motor, and gear) 2,500 lbs. • Swamped capacity (total weight motor, persons and gear, boat will support if filled with water) 4,000 lbs. • Persons capacity 10 • Max hp 200 • Transom height (single engine) 25" (twin engine) 20" • Whaler Drive takes 25" only.



Temptation 2200. LOA 22'3" • Beam 7'5" • Draft (lower unit tilted clear of water) 14" • Boat weight (outboard) 2,350 lbs. (I/O) 3,350 lbs. (twin Sea Drives) 3,150 lbs. • Max. weight capacity NMMA and U.S. Coast Guard standards (outboard: persons, motor, and gear) 2,655 (I/O: persons and gear) 1,850 lbs. (twin Sea Drives: persons and gear) 1,410 lbs. • Swamped capacity (total weight, outboard motor, persons and gear, boat will support if filled with water) 5,000 lbs. • Persons capacity 11 (Sea Drives) 9 • Max. hp 240 • Transom height (single outboard) 25" (twin outboards) 20" • Whaler Drive takes 25" only.



Temptation 2500. LOA 24'7" • Beam 8'0" • Draft (lower unit tilted clear of water) 16" • Boat weight (outboard) 4,000 lbs. (I/O) 5,170 lbs. (twin Sea Drives) 5,030 lbs. • Max. weight capacity, NMMA and U.S. Coast Guard standards (outboard: persons, motor, and gear) 3,035 lbs. (I/O: persons and gear) 2,150 lbs. (twin Sea Drives: persons and gear) 2,250 lbs. • Swamped capacity, (total weight, outboard motor, persons and gear, boat will support if filled with water) 9,000 lbs. • Persons capacity 12 • Max. hp 300 • Transom height (single outboard) 25" (twin outboards) 20" • Whaler drive takes 25" only.



Boston Whaler quality. It's not a claim, it's a legend.

Boston Whaler,® 1149 Hingham Street, Rockland, MA 02370 (617) 871-1400